



Innovation with  
engineering legacy



**GLW** TRAUMA

# Artemis Proximal Femoral Nail System

The Artemis Proximal Femoral Nail System is indicated for fixation of stable and unstable intertrochanteric fractures and subtrochanteric, including but not limited to nonunion, malunion and tumor resections.



# Design Features

The Artemis Proximal Femoral Nail System encompasses four implant components. All components are available in sterile packaging only.

## Proximal Femoral Nail Kit

The proximal femoral nail kits, consist of the **Nail** and a preassembled **Set Screw**. Its universal design is intended for left and right application.

The nail is constructed of a titanium alloy core encompassed by injection molded carbon fiber reinforced (CFR) polyether ether ketone (PEEK). The set screw is made of titanium alloy.

## Lag Screw

The lag screw has a diameter of 11mm and is available in lengths ranging from 70 to 130mm in 5mm increments. The most common lengths are offered in 2.5mm increments. The lag screw is made of titanium alloy.

## Anti-Rotational Locking Pin

The anti-rotational locking pin is designed to provide additional rotational stability and fixation performance.

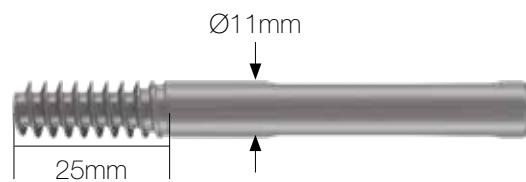
## Locking Screw

The locking screw of the Artemis Proximal Femoral Nail System is blunt tipped, self tapping, dual lead thread and have a diameter of 5mm. It is fully threaded and comes in a wide range from 25mm to 110mm in 2.5mm increments up to 50mm and in 5mm increments up to 110mm. A high torque transfer is achieved through the T25 torx screw head.

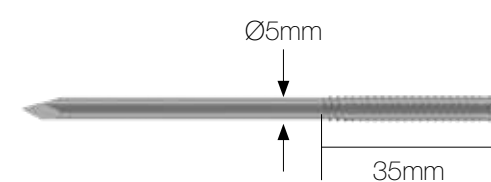
## Instrumentation

The Artemis system has a state-of-the-art instrument platform. The instruments are designed for a minimally invasive surgical technique.

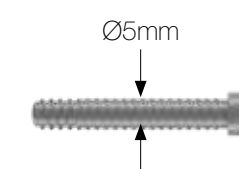
**Lag screw**  
(70–130mm)



**Anti-Rotational Locking Pin**  
(70, 95, 110mm)



**Locking screw**  
(25-110mm)



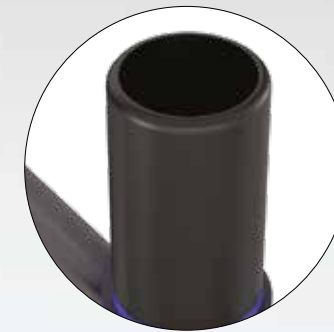
300-440mm  
(in 20mm increments)



# Hybrid Materials and Manufacturing

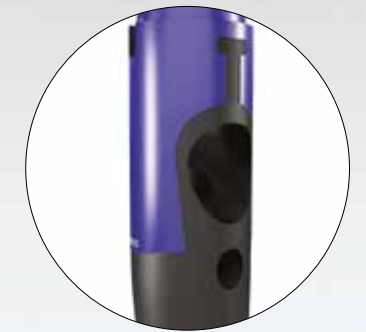
Patented\* manufacturing process utilizes a combination of titanium and composite materials. The nails structural benefits are provided by the strength of titanium and the flexibility of CFR PEEK which allows for increased micro movements and callus formation. The process of minimized titanium milling with the benefit of injection molded CFR PEEK results in reduced waste manufacturing.

**REDUCED  
WASTE  
MANUFACTURING**



### Added Visibility

The composite materials provide clinical benefits with improved visualization in both long and short nail configurations. This added visibility allows for easier assessment of bone healing and Lag Screw position.



### Lagshield™ Function

Lagshield is a protective layer of CFR PEEK on the lateral side of the nail. This prevents the lag screw reamer from notching the nails load bearing titanium core during the reaming procedure.



The proximal femoral nail kits, consist of the **Nail** and a preassembled **Set Screw**. Its universal design is intended for left and right application.



Smooth nail insertion, preventing anterior impingement

Titanium

CFR PEEK

# Lagshield™ Function

Lagshield is a protective layer of CFR PEEK on the lateral side of the nail. This prevents the lag screw reamer from notching the nail's load bearing titanium core during the reaming procedure.



Lag shield aids in guidance of the reamer and protects the load bearing titanium, preventing the lag screw reamer from notching the nail's titanium core during the reaming procedure.

# Stability and Rotational Control

Enhanced Stability and Rotational Control: Consists of a Lag Screw with optional combination of integrated anti-rotational Locking Pin which supports compression and helps to remove the Z-effect.



A simple, one piece cannulated set screw locks in to the lag screw, preventing rotation of the lag screw.

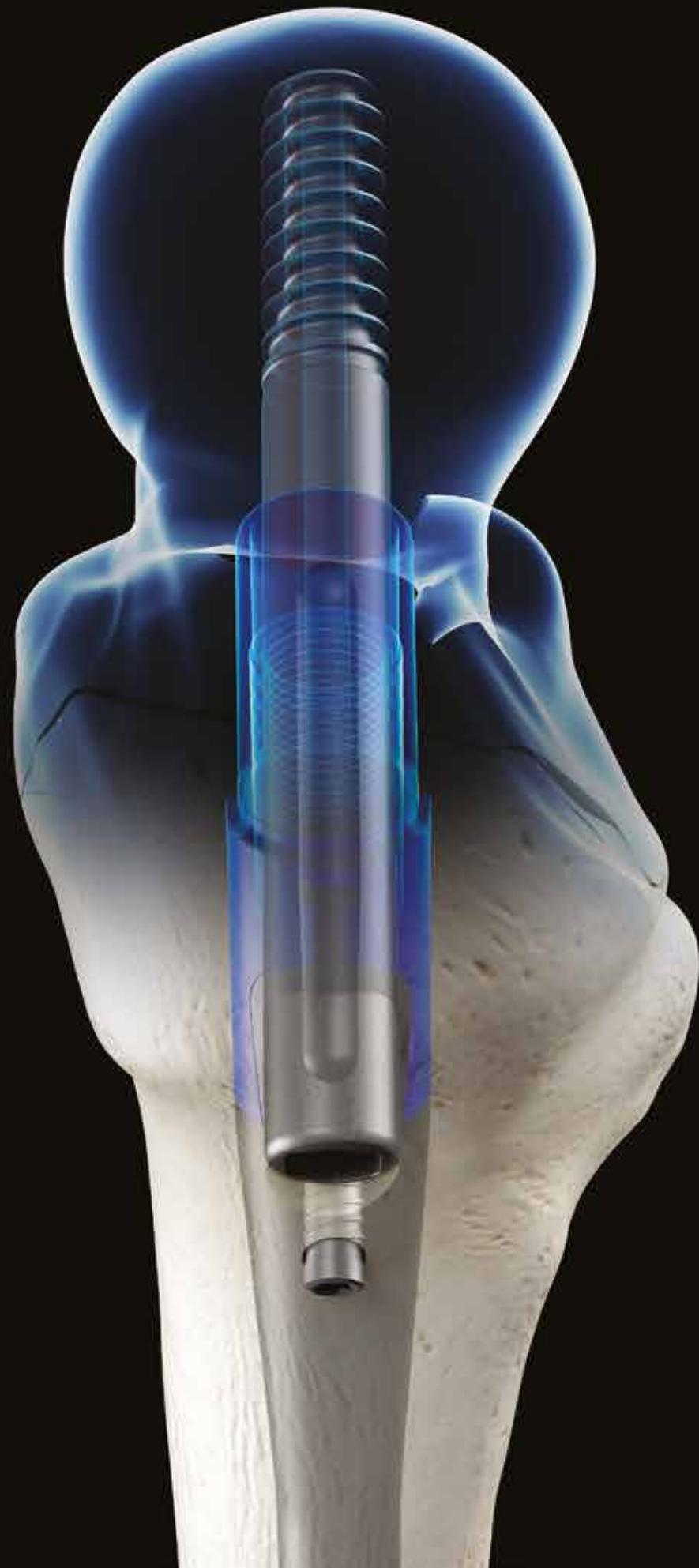


The lag screw can move backwards, with the head fragment but cannot rotate.



Locking pin locks into the lateral cortex and the nail, providing additional stability allowing the head fragment to collapse with the lag screw.





## Added Visibility

The composite materials provide clinical benefits with improved visualization in both long and short nail configurations. This added visibility allows for easier assessment of bone healing.

The radiolucent proximal end of the nail provides better radiographic visibility of the femoral neck in an oblique medio-lateral image.

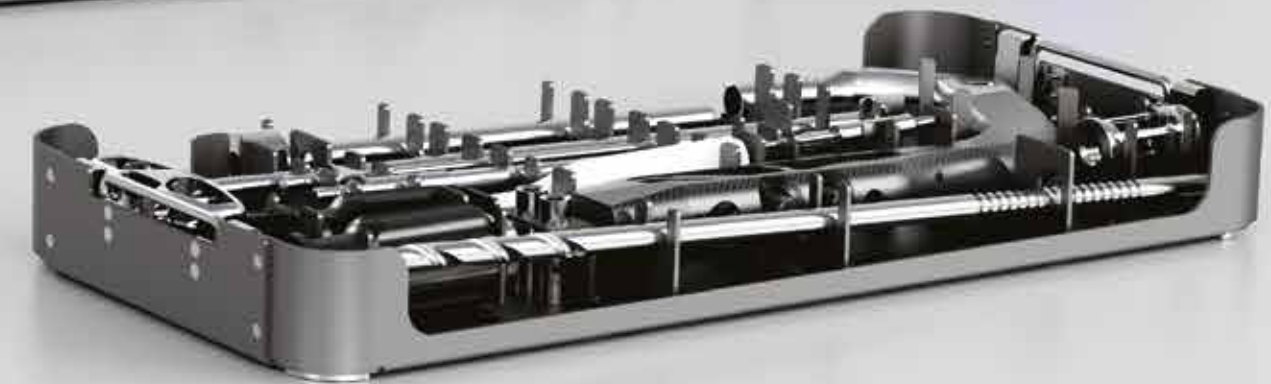
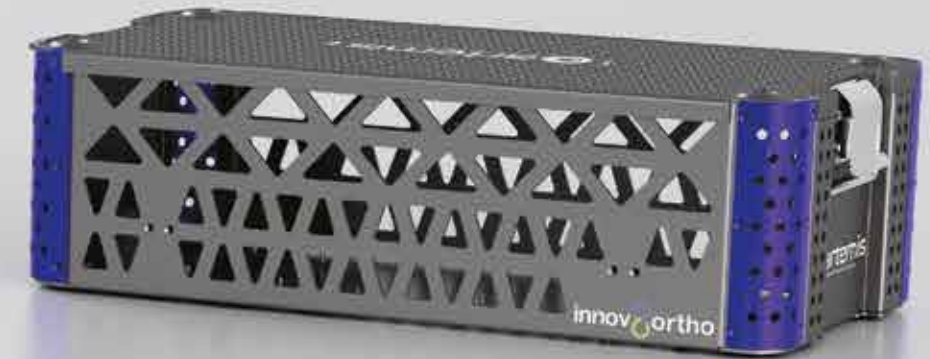
Radiolucent  
proximal end



# Instrumentation

Streamlined one instrument system tray with three dedicated layers for preparation, insertion and extraction.

Carefully redesigned instrumentation for ease of use, allowing for a minimally invasive technique.



Targeter Proximal Geometry

Easy Nail Engagement



Nail depth indicators

Wider clearance for soft tissue concerns

Friction lock for tissue sleeves

One piece targeting device

Carbon Fiber Targeter for better visibility

Strike plate quick connect



Alignment groove for precise lateral placement of K-wire





CAUTION: Federal (USA) law restricts this device to sale by or on the order of a surgeon. Rx only.

This document is intended solely for the use of healthcare professionals. This technique was developed in conjunction with healthcare professionals. A surgeon must always rely on his or her own professional clinical judgment when deciding whether to use a particular product when treating a particular patient. GLW, Inc does not dispense medical advice and recommends that surgeons be trained in the use of any particular product before using it in surgery. The information presented is intended to demonstrate a GLW, Inc product. A surgeon must always refer to the package insert, product label and/or instructions for use, including the instructions for Cleaning and Sterilization (if applicable), before using any GLW, Inc product.

GLW, Inc, GLW Medical Innovation, and Artemis are trademarks of GLW, Inc. Innov8ortho, LLC is the exclusive distributor of the Proximal Femoral Nail System.

[www.glwmed.com](http://www.glwmed.com)

© 2023 GLW, Inc. All rights reserved.

Patents: [www.glwmed.com/patents/](http://www.glwmed.com/patents/)

Ref: I8OBRO-V1-01-23-EN



Scan for more product information



**Legal Manufacturer:**

GLW, Inc.  
300 Sylvan Ave, 2<sup>nd</sup> Floor  
Englewood Cliffs, NJ 07632

**innov8ortho**

**Distributed by:**

Innov8ortho, LLC  
300 Sylvan Ave, 2nd Floor  
Englewood Cliffs, NJ 07632  
[custsvc@innov8ortho.com](mailto:custsvc@innov8ortho.com)