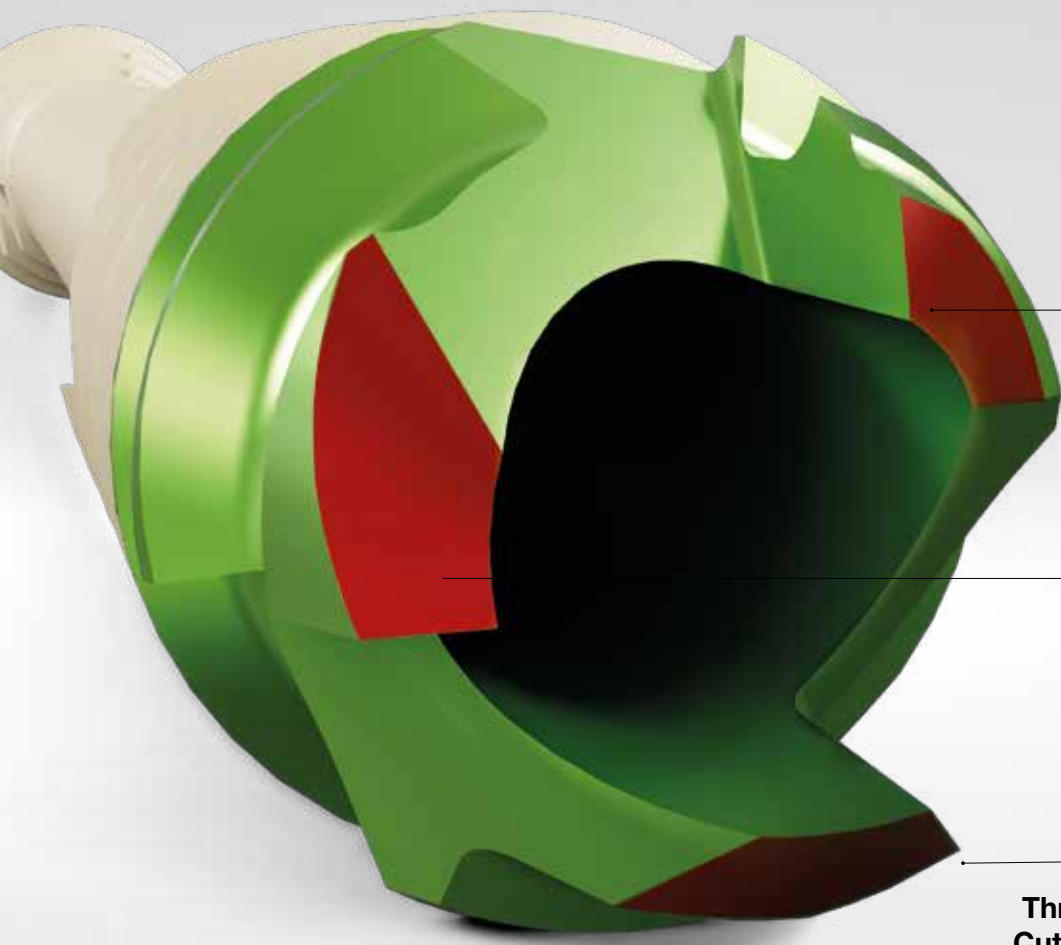


**creed**™  
Ortholucet Implants

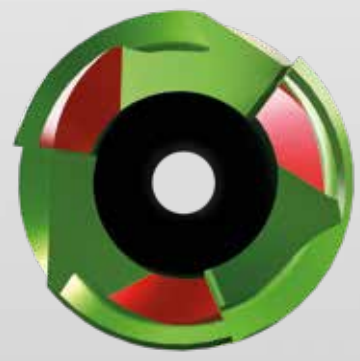


Seeing is **Believing**

**CARBON22**™  
A GLW, Inc. company



Three Unique Cutting Flutes



# Precision Cutting

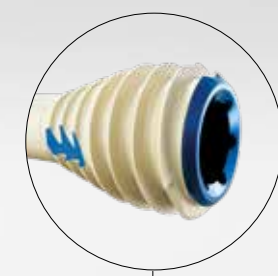
The three aggressive cutting flutes of the screw tip are designed to deliver maximum compression<sup>1</sup> with minimum torque. Superior cutting geometry delivers optimal bone chip displacement, reduces insertion force, and requires no predrilling.<sup>2</sup>

<sup>1</sup>Data on file.  
<sup>2</sup>For Ø7.4mm screw minimized predrilling recommended.

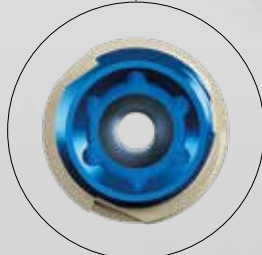
**Reverse-Cutting Design**  
 Expedites screw extraction



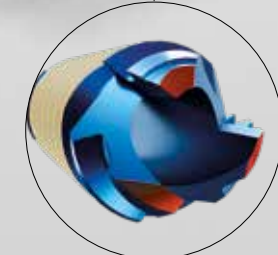
**Forward-Cutting Design**  
 Accelerates screw head countersinking



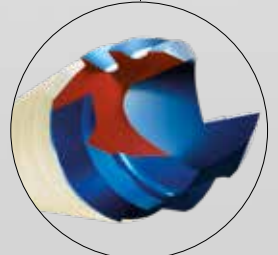
**Ti Core with**  
 Anti-rotation hex provides a strong and stable construct



**Torx Interface**  
 Promotes a sturdy driver/screw interface



**Self-Drilling Tip Design**



**Self-Tapping Tip Design**

Streamlines screw insertion



**Titanium Reverse-Cutting Feature**  
 Facilitates removal of screw





# Largest Screw Cannulation

With the largest cannulation and k-wire diameter per screw size on the market, Creed screws are easily inserted using low torque. The larger k-wire, combined with “Stinger Tip” technology, results in a more precise screw insertion trajectory.



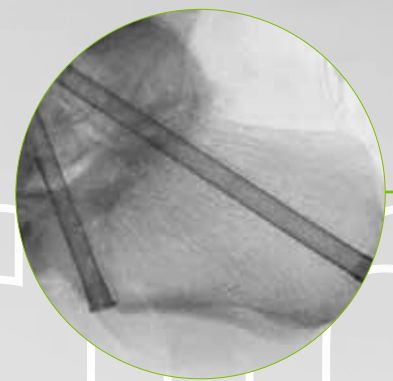
Stinger Tip

Headed	Headless	Ø Screw Size	Ø Screw Cannulation	Ø K-wire Size
		Ø2.5mm	Ø1.4mm	Ø1.3mm
		Ø4.3mm	Ø2.15mm	Ø2.0mm
		Ø5.6mm	Ø2.9mm	Ø2.8mm
		Ø7.4mm	Ø3.3mm	Ø3.2mm

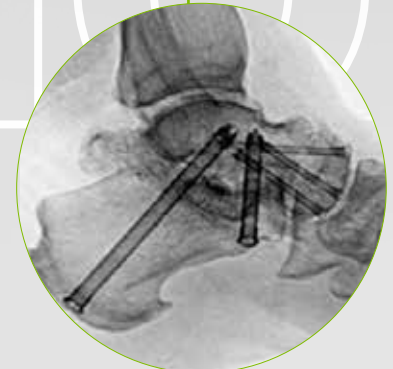
# Ortholucen<sup>®</sup> Technology

The patented<sup>3</sup> combination of thin-walled titanium, reinforced with a PEEK overmold, provides significant clinical benefits over traditional metal implants by drastically improving the visualization of bones and joint spaces. This novel hybrid material combination provides clear bone visibility during plain radiography as well as less scatter with advanced imaging techniques.

Ortholucen<sup>®</sup>



Subtalar fusion



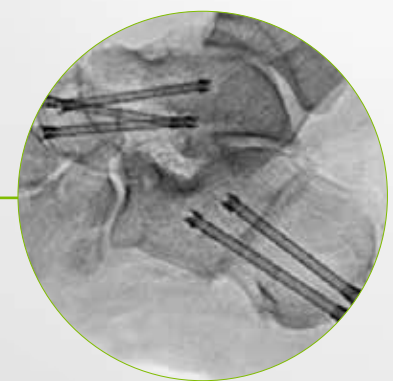
Medial double arthrodesis (TN and Subtalar fusion)



Posterior malleolar fracture



Ankle fusion



Cavovarus correction (Dwyer calcaneal osteotomy and TN fusion)



Scarf bunionectomy with Akin osteotomy



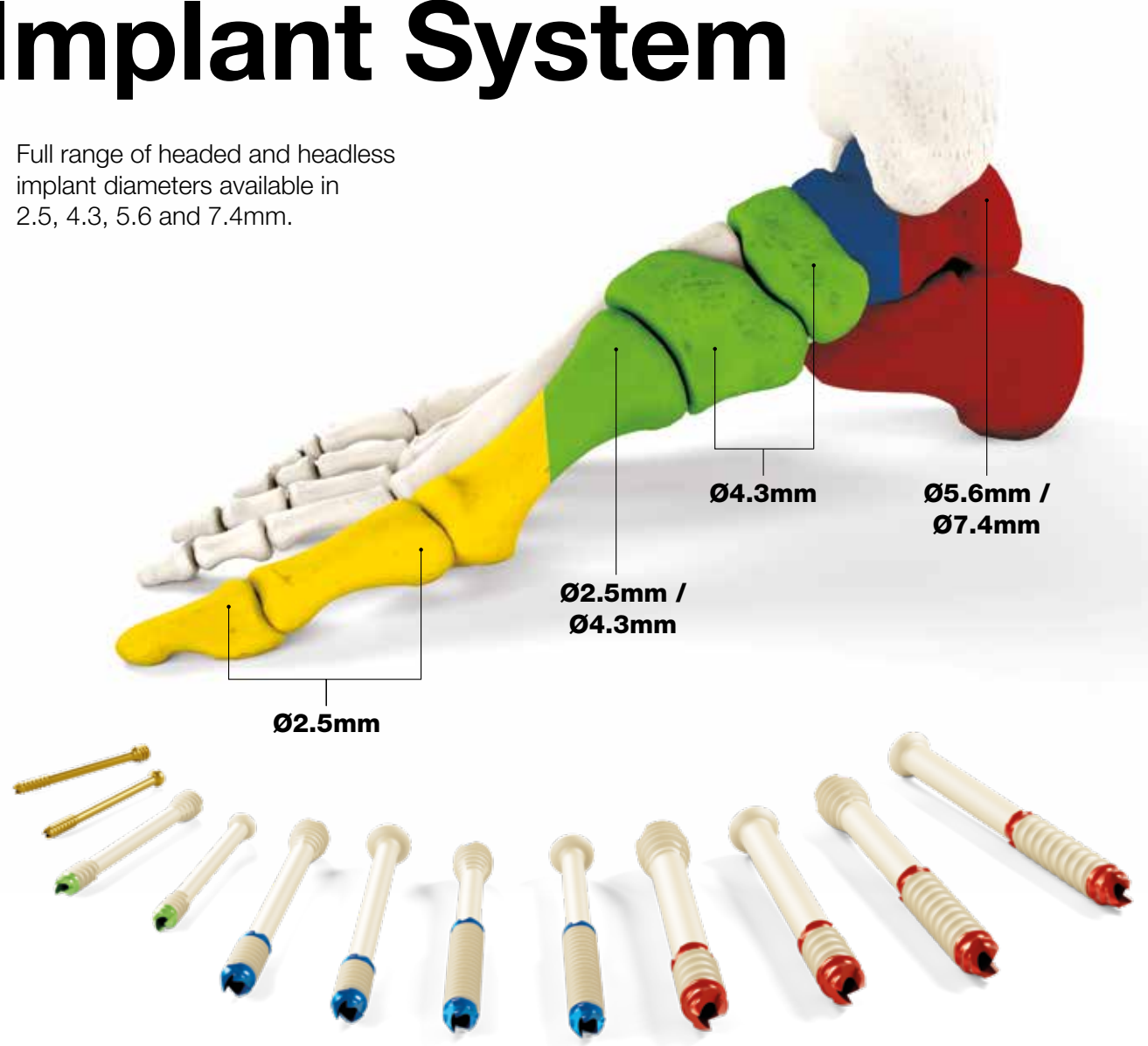
Lesser toe deformities

<sup>3</sup>Patent US11253304B2.



# Versatile Cannulated Implant System

Full range of headed and headless implant diameters available in 2.5, 4.3, 5.6 and 7.4mm.



**170**  
Screw  
Variations

**85**  
Headless  
Screws

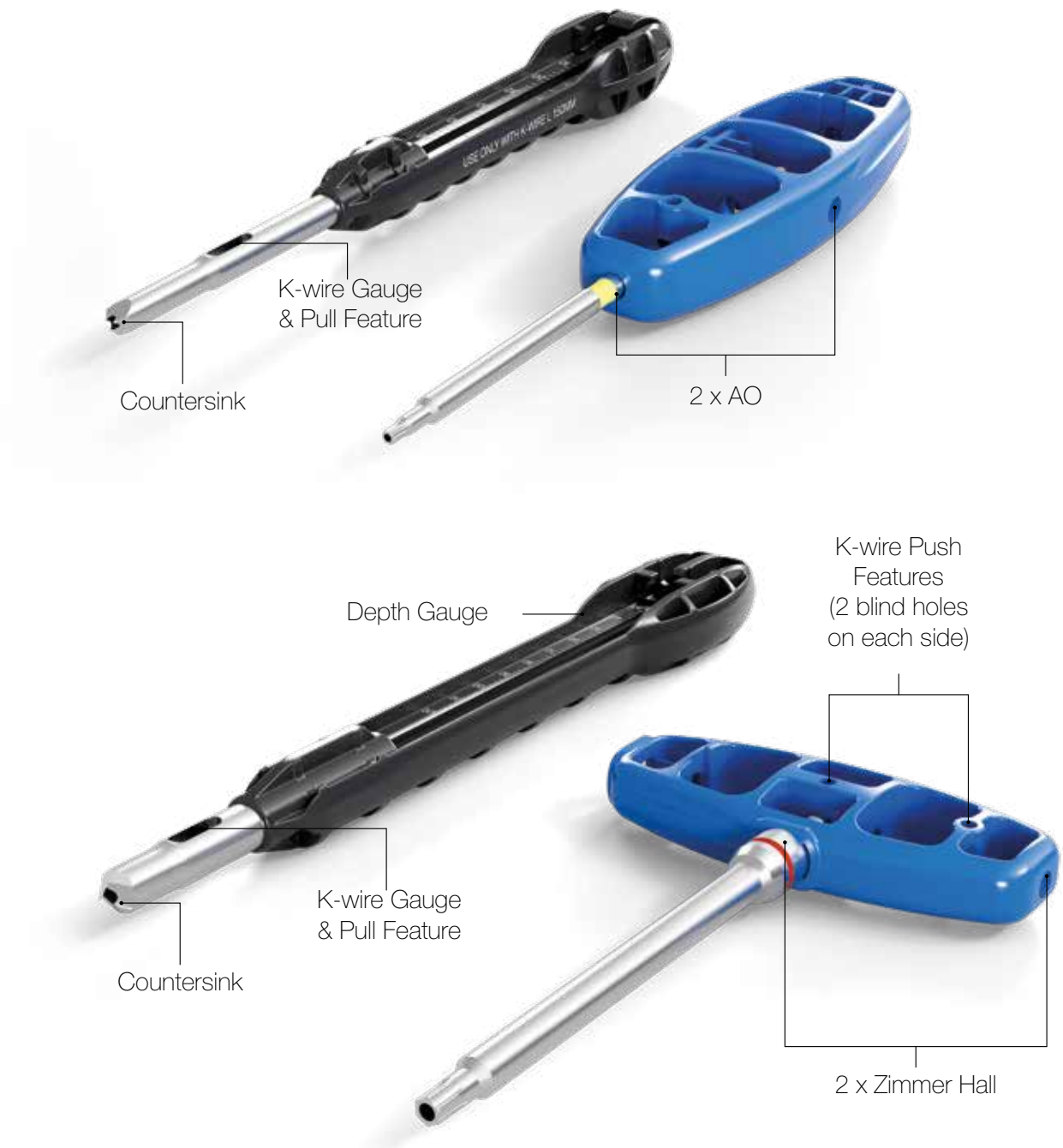
**85**  
Headed  
Screws

**4x**  
Various  
Diameters

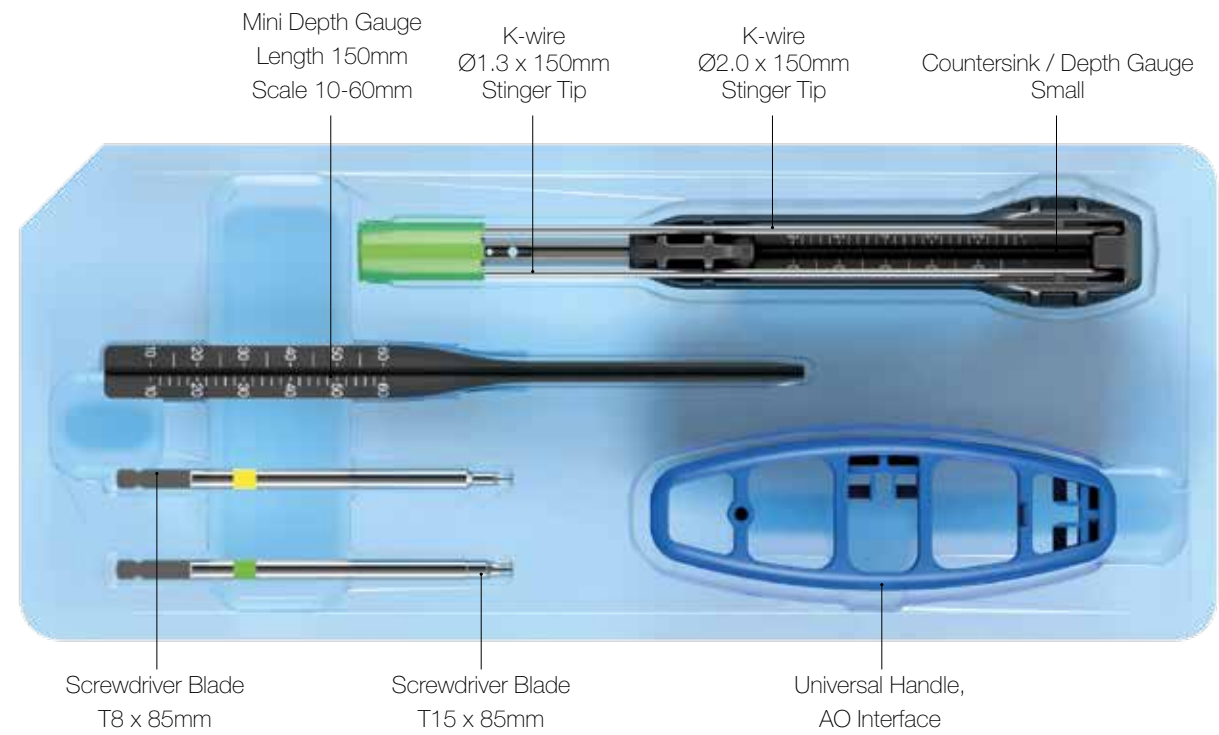
**5x**  
Thread  
Lengths

# Sterile, Disposable Instrument Kits

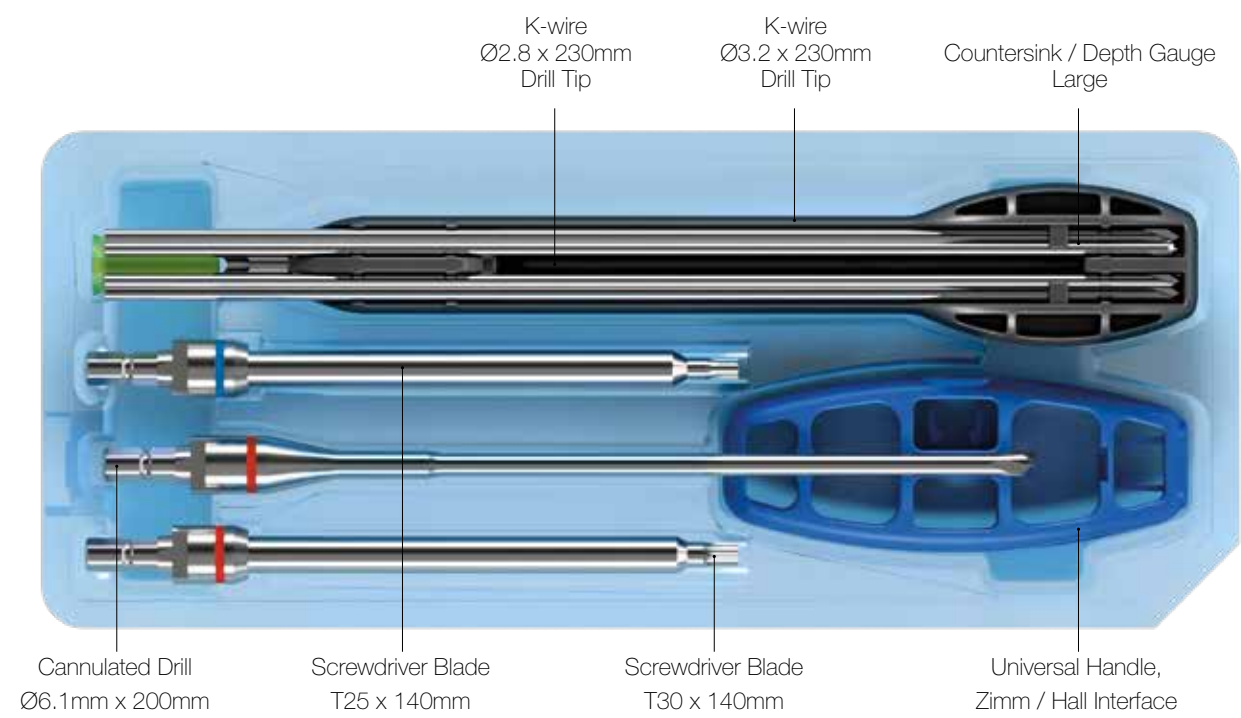
Single-use



## Small Instrument Kit



## Large Instrument Kit



\*For headed screw configurations only.



CAUTION: Federal (USA) law restricts this device to sale by or on the order of a surgeon. Rx only.

This document is intended solely for the use of healthcare professionals. This technique was developed in conjunction with healthcare professionals. A surgeon must always rely on his or her own professional clinical judgment when deciding whether to use a particular product when treating a particular patient. Carbon22 does not dispense medical advice and recommends that surgeons be trained in the use of any particular product before using it in surgery. The information presented is intended to demonstrate a Carbon22 product. A surgeon must always refer to the package insert, product label and/or instructions for use, including the instructions for Cleaning and Sterilization (if applicable), before using any Carbon22 product.

GLW, Inc, GLW Medical Innovation, and Creed are trademarks of GLW, Inc. Innov8ortho is the exclusive distributor of Creed Ortholucent Implants.

[www.carbon22.net](http://www.carbon22.net)



Scan for more product information



**Distributed by:**

Innov8ortho, LLC  
300 Sylvan Ave, 2nd Floor  
Englewood Cliffs, NJ 07632  
custsvc@innov8ortho.com



**Legal Manufacturer:**

GLW, Inc.  
300 Sylvan Ave, 2<sup>nd</sup> Floor  
Englewood Cliffs, NJ 07632