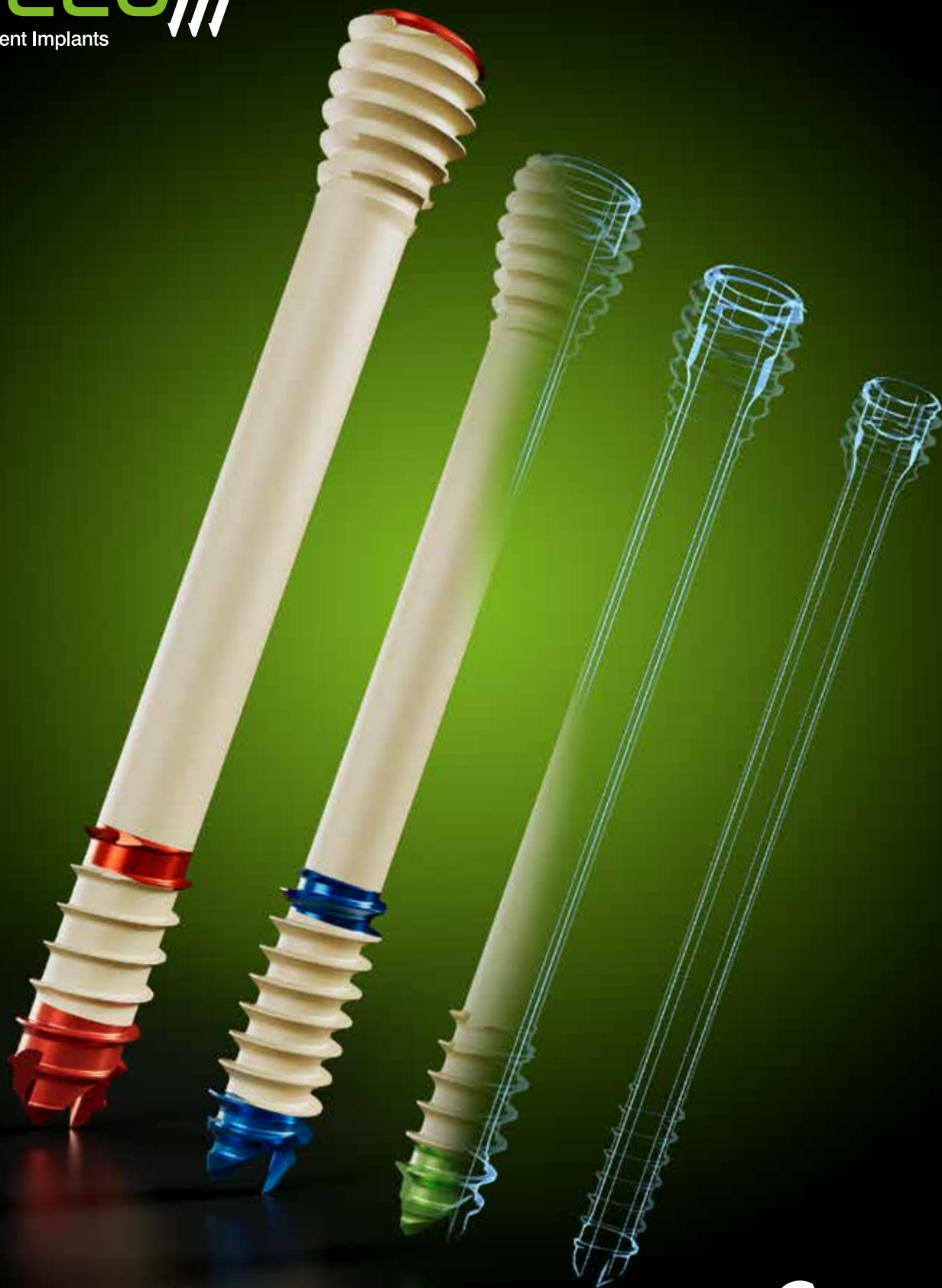
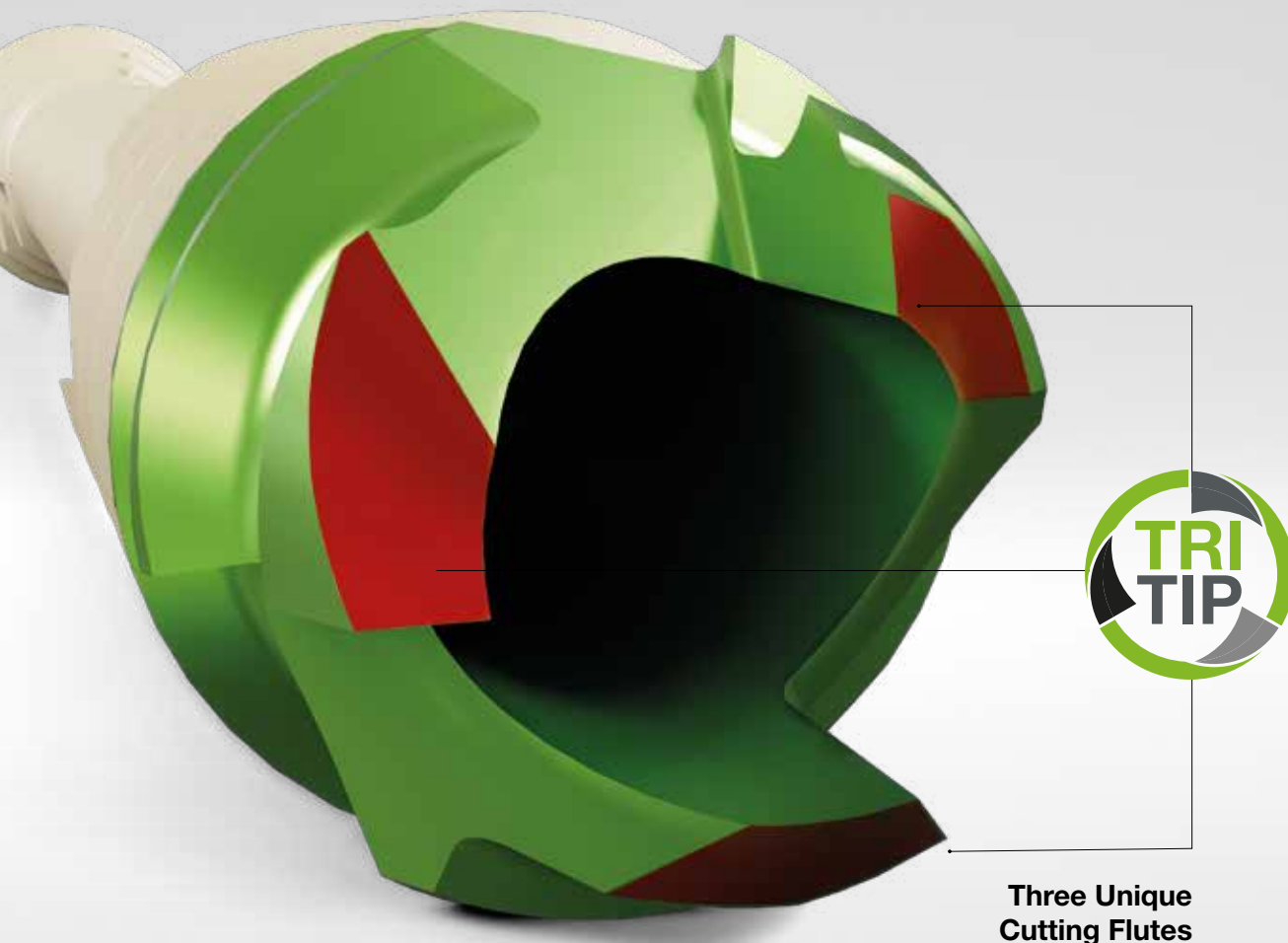


creedTM
Ortholuculent Implants



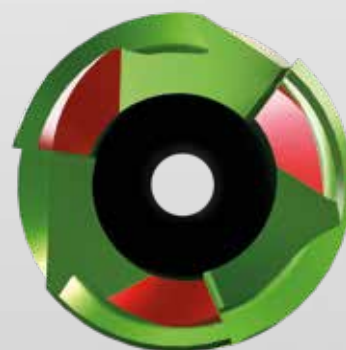
Seeing is **Believing**

 **GLW**
medical



**Three Unique
Cutting Flutes**

Precision Cutting



The three aggressive cutting flutes of the screw tip are designed to deliver maximum compression¹ with minimum torque. Superior cutting geometry delivers optimal bone chip displacement, reduces insertion force, and requires no predrilling.²

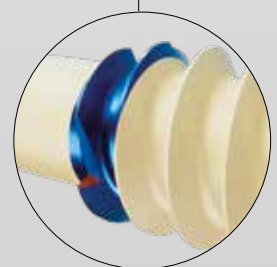
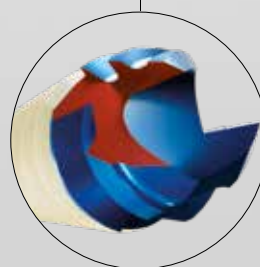
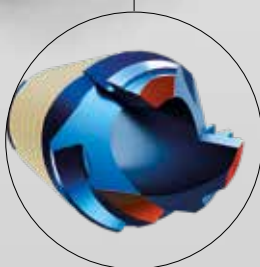
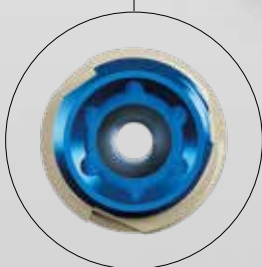
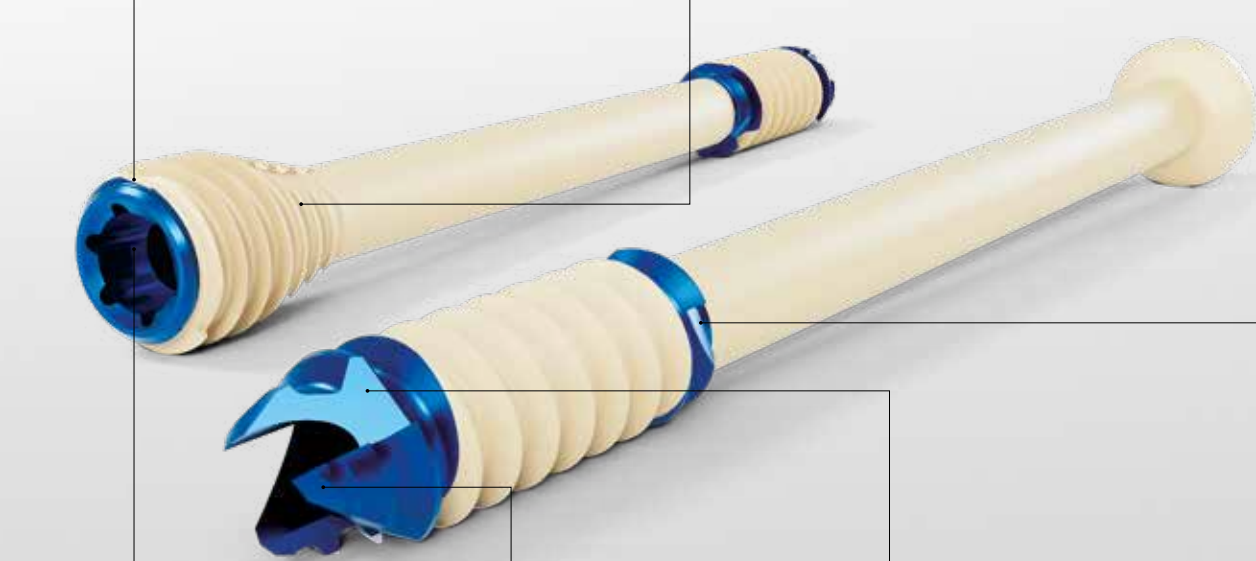
¹Data on file.

²For Ø7.4mm screw minimized predrilling recommended.

Reverse-Cutting Design
Expedites screw extraction

Forward-Cutting Design
Accelerates screw head countersinking

Ti Core with
Anti-rotation hex provides a strong and stable construct



Torx Interface
Promotes a sturdy driver/screw interface

Self-Drilling Tip Design

Self-Tapping Tip Design

Titanium Reverse-Cutting Feature

Facilitates removal of screw

Streamlines screw insertion



Stinger Tip

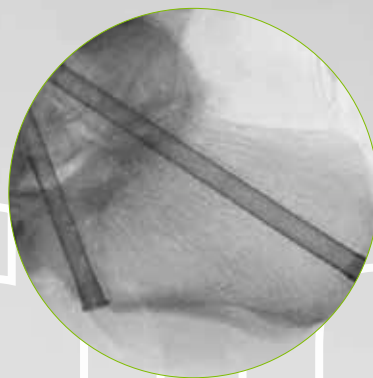
Largest Screw Cannulation

With the largest cannulation and k-wire diameter per screw size on the market, Creed screws are easily inserted using low torque. The larger k-wire, combined with “Stinger Tip” technology, results in a more precise screw insertion trajectory.

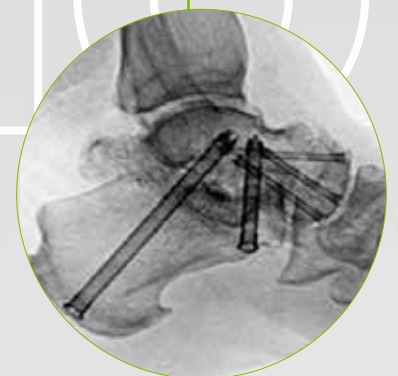
Headed	Headless	Ø Screw Size	Ø Screw Cannulation	Ø K-wire Size
		Ø2.5mm	Ø1.4mm	Ø1.3mm
		Ø4.3mm	Ø2.15mm	Ø2.0mm
		Ø5.6mm	Ø2.9mm	Ø2.8mm
		Ø7.4mm	Ø3.3mm	Ø3.2mm

Ortholucen[®] Technology

The patented³ combination of thin-walled titanium, reinforced with a PEEK overmold, provides significant clinical benefits over traditional metal implants by drastically improving the visualization of bones and joint spaces. This novel hybrid material combination provides clear bone visibility during plain radiography as well as less scatter with advanced imaging techniques.



Subtalar fusion

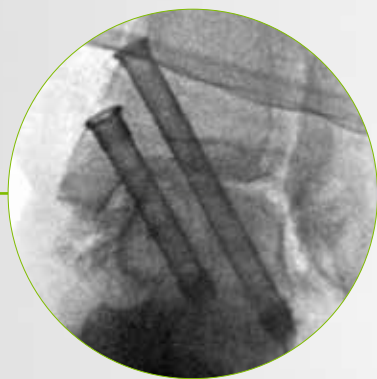


Medial double arthrodesis
(TN and Subtalar fusion)

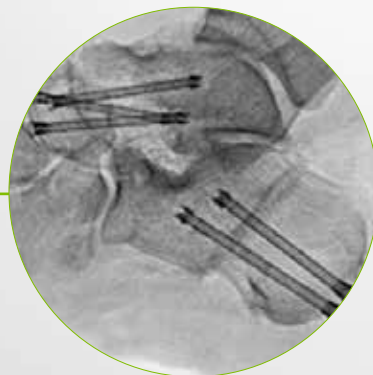
³Patent US11253304B2.



Posterior malleolar fracture



Ankle fusion



Cavovarus correction
(Dwyer calcaneal osteotomy
and TN fusion)



Scarf bunionectomy
with Akin osteotomy

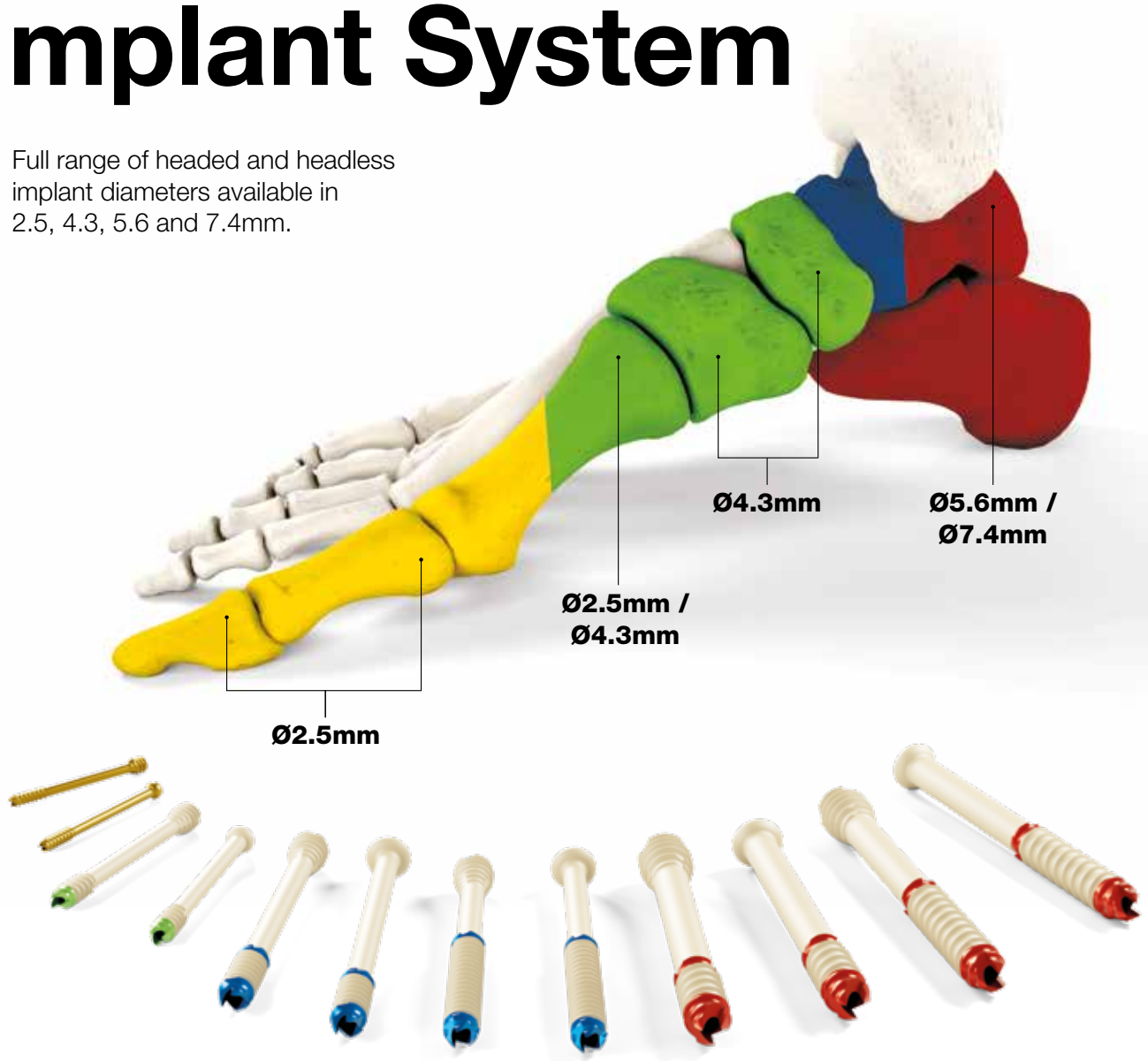


Lesser toe deformities

Wolfe

Versatile Cannulated Implant System

Full range of headed and headless implant diameters available in 2.5, 4.3, 5.6 and 7.4mm.



170

Screw
Variations

85

Headless
Screws

85

Headed
Screws

4x

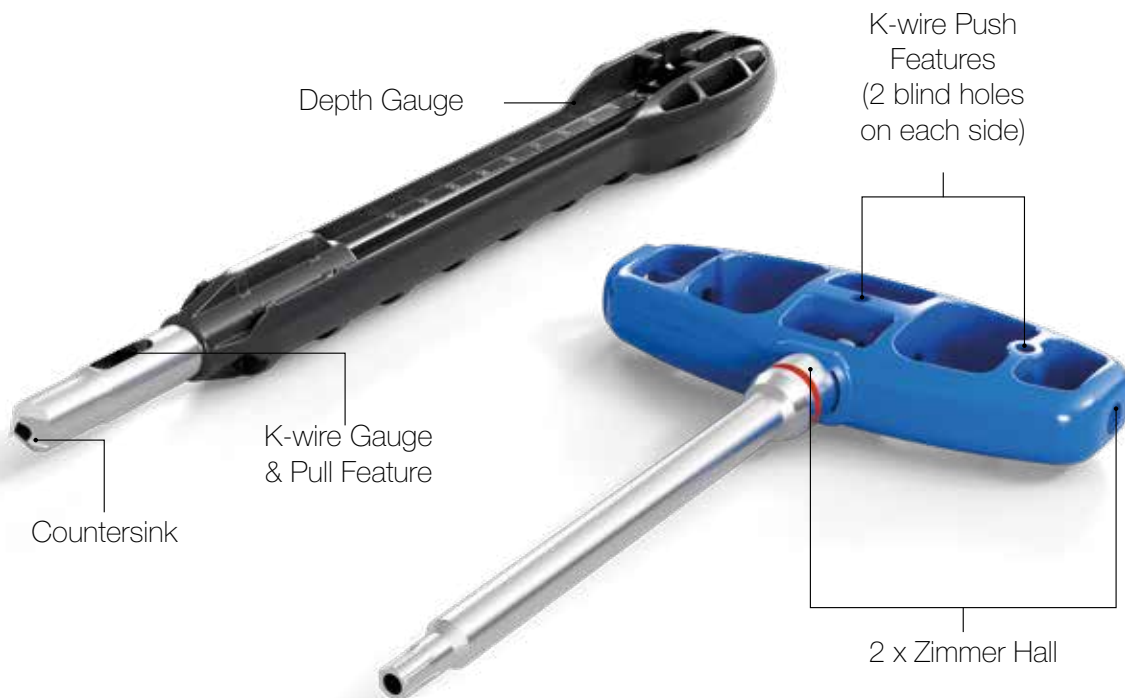
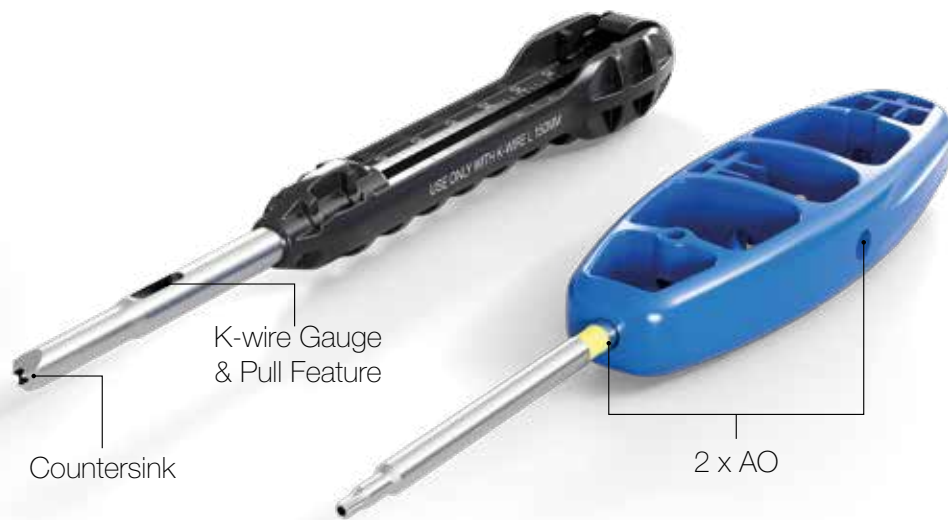
Various
Diameters

5x

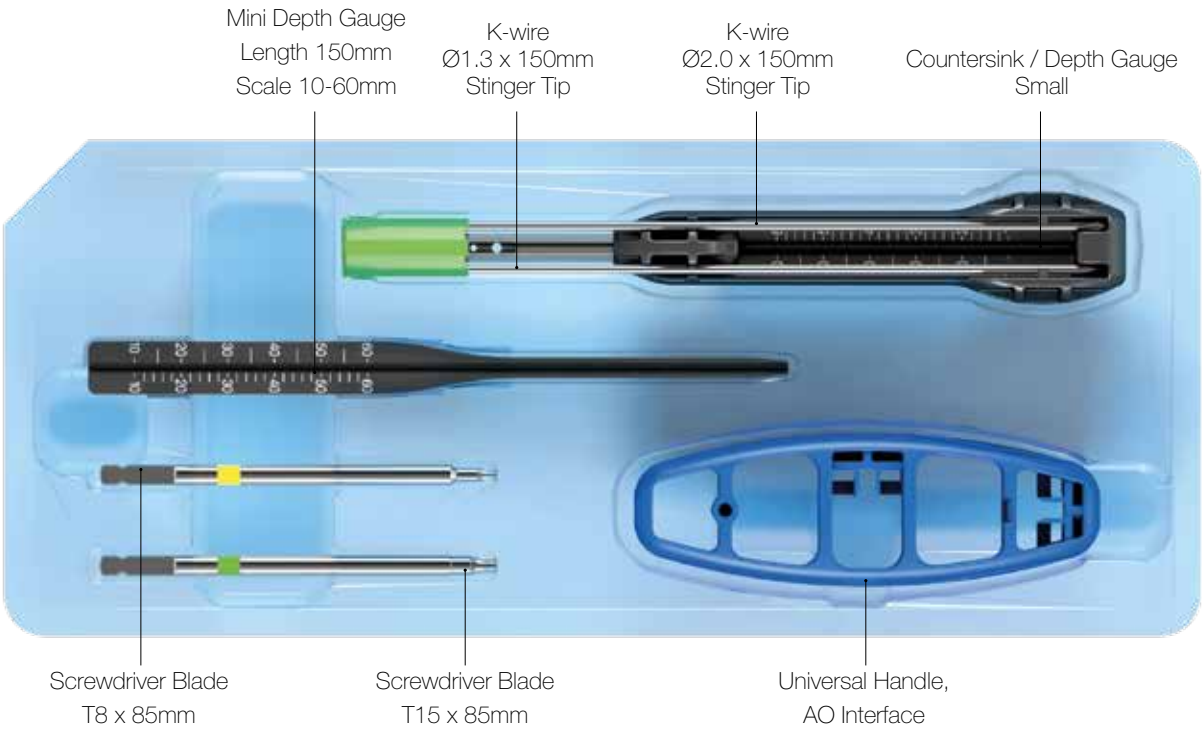
Thread
Lengths

Sterile, Disposable Instrument Kits

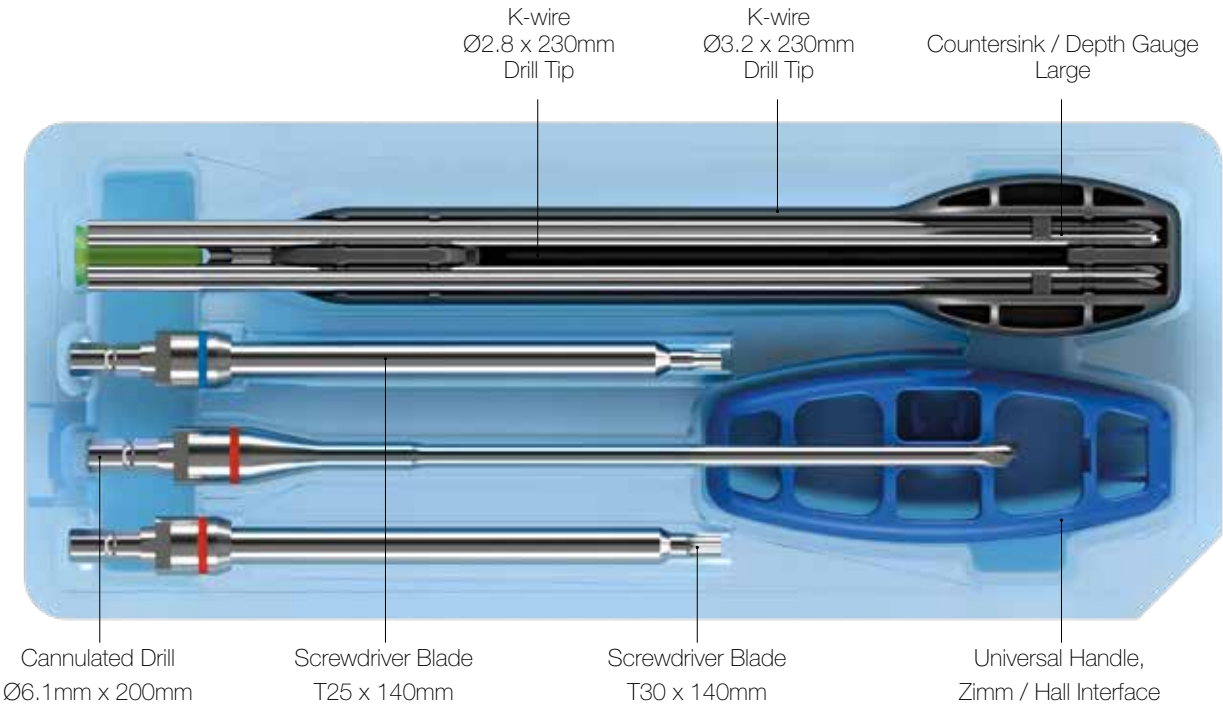
Single-use



Small Instrument Kit



Large Instrument Kit



Screw Caddy
with Instrument Kits



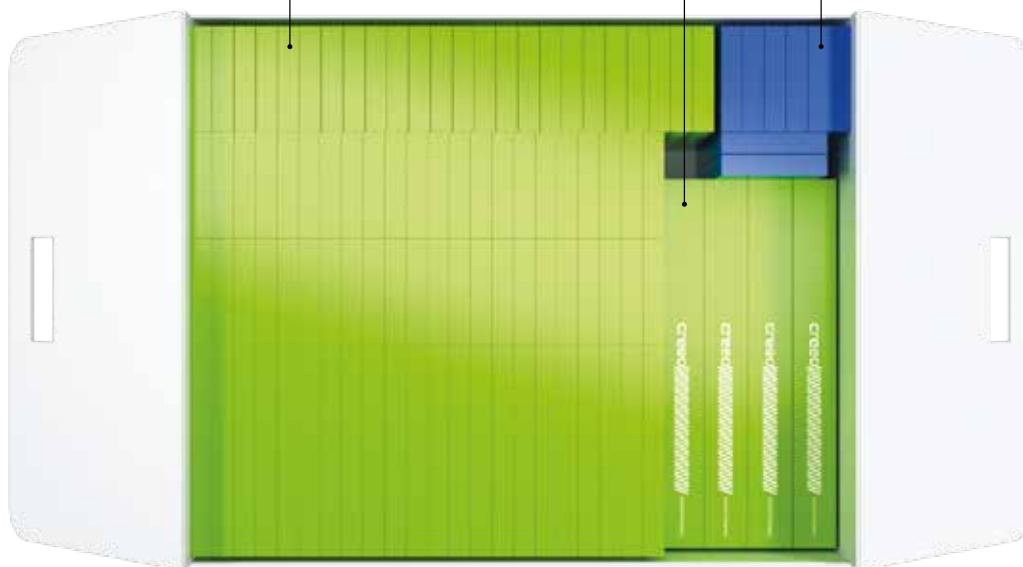
Shipping Container



Creed Screws

Instruments Kits

Washers*



*For headed screw configurations only.



CAUTION: Federal (USA) law restricts this device to sale by or on the order of a surgeon. Rx only. Implants and Instrument kits for treatment of temporary and permanent disabled individuals (patients).

GLW, Inc, GLW Medical and Creed are trademarks of GLW, Inc. Innov8ortho is the exclusive distributor of Creed Ortholucent Implants.

www.glwmed.com

© 2025 GLW, Inc. All rights reserved.
Patents: www.glwmed.com/patents/



Scan for more
product information



Legal Manufacturer:

GLW, Inc.
930 Sylvan Ave, Suite 125
Englewood Cliffs, NJ 07632



Distributed by:

Innov8ortho, LLC
930 Sylvan Ave, Suite 125
Englewood Cliffs, NJ 07632
custsvc@innov8ortho.com

Ref: CRE-BRO-07-25-EN